



SOBHA CENTRAL



WELCOME TO SOBHA CENTRAL WHERE IT ALL CONNECTS.

Set along Sheikh Zayed Road, Sobha Central sits at the intersection of movement, meaning, and modernity. With the Dubai skyline as your backdrop and the city's pulse at your doorstep, this address redefines what it means to live in the center of it all.

Designed for those who seek balance between work and home, pace and pause - it offers office spaces, a business centre, retail districts, and the vibrant energy of urban life.

INTRODUCING



THE SERENE

AT SOBHA CENTRAL

PROJECT HIGHLIGHTS

Located on Sheikh Zayed Road

Six interconnected residential towers connected through a circulation path joining all the amenities

The project delivers mixed use versatility with residential, retail, healthcare, and office spaces

Panoramic views of the Jumeirah Islands, Dubai Marina, Bluewaters and The Palm

1 and 2 bedroom apartments ranging from 495.14 sq. ft. to 872.20 sq. ft.

Large urban park on the podium level offering elevated amenities

Retail outlets including a full-fledged shopping mall

A dedicated fly-out bridge from 2nd floor podium directly to the SZR intersection

Minutes away from the Jebel Ali metro station

CONFIGURATIONS

Configuration	Min Area (Sq Ft)	Max Area (Sq Ft)	Starting Price (AED)
1 Bedroom	495.14	748.85	1.40 MN
2 Bedrooms	852.39	872.20	2.47 MN

PAYMENT PLAN

60% DURING CONSTRUCTION

40% UPON COMPLETION

Instalments	Payment Percentage	Milestones
Booking Amount	20%	On Booking date
First Instalment	10%	12 Months from booking date
Second Instalment	10%	24 Months from booking date
Third Instalment	10%	36 Months from booking date
Fourth Instalment	10%	42 Months from booking date
Final Instalment	40%	On Completion

COMPLETION DATE: DECEMBER 2029

AMENITIES



WATER



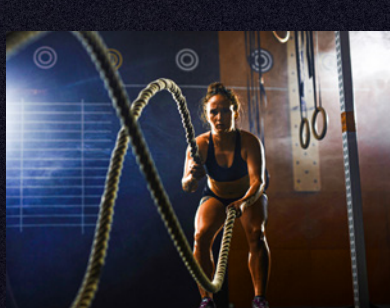
FITNESS & SPORT



RECREATION



GREEN SPACES

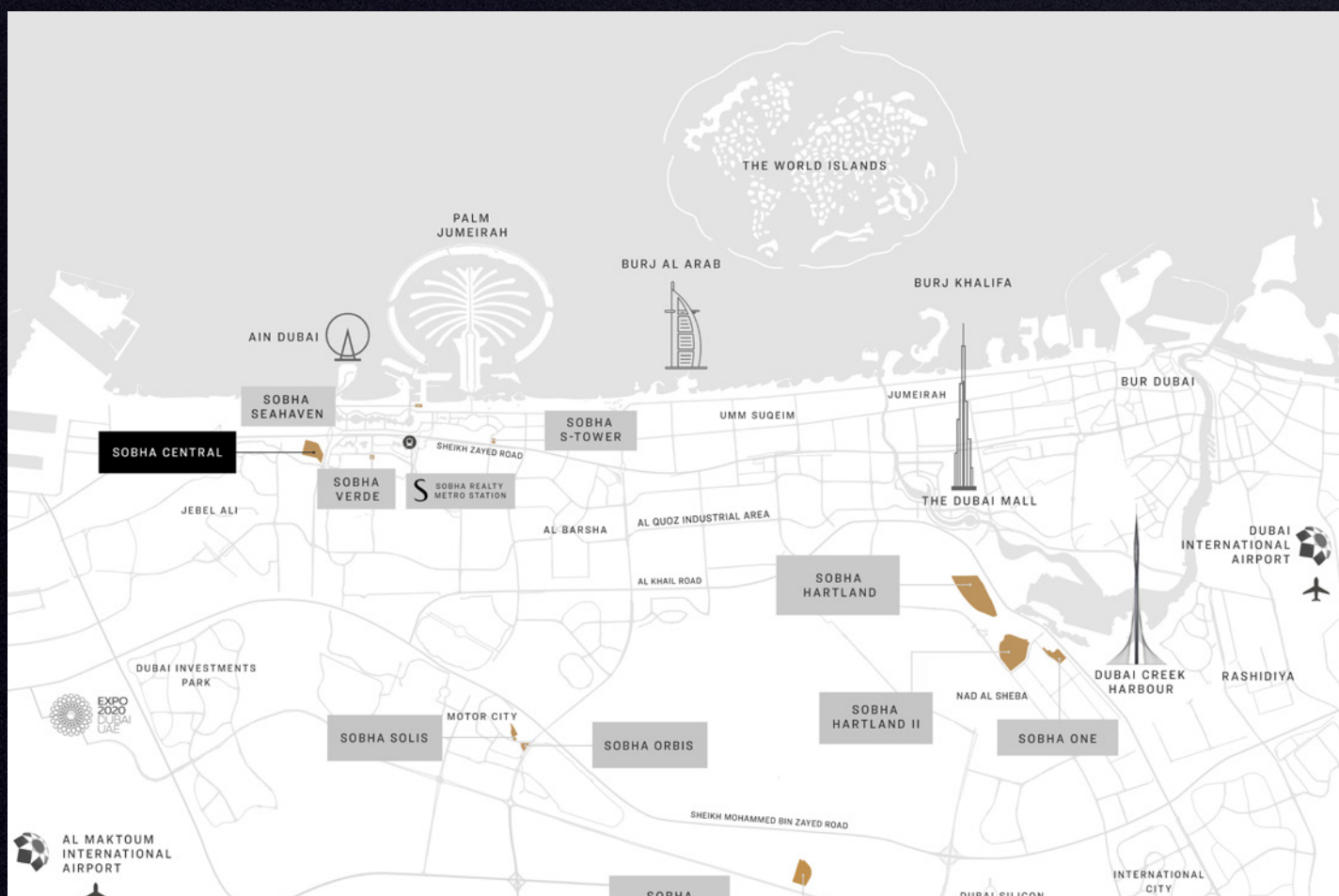


INDOOR

MASTERPLAN



LOCATION MAP



SOBHA

REALTY



Disclaimer:
The images use computer graphics technology (architectural rendering) to showcase the building and apartment's design, including the facade, elevations, and interiors. All furniture, lighting, fixtures, fixtures, and art shown are for marketing purposes only. All contents in these images are for illustrative purposes only and subject to change.
The images shown are for illustrative purposes only and may not be an exact representation of the product.
The Amenities mentioned are only representational and informative. Information, images and details, or locations shown hereby are only an indicative of the envisaged developments and the same are subject to approvals from local authorities. The Developer reserves rights to make additions, deletions, alterations, or amendments without prior notice.